



---

**OUR MISSION**

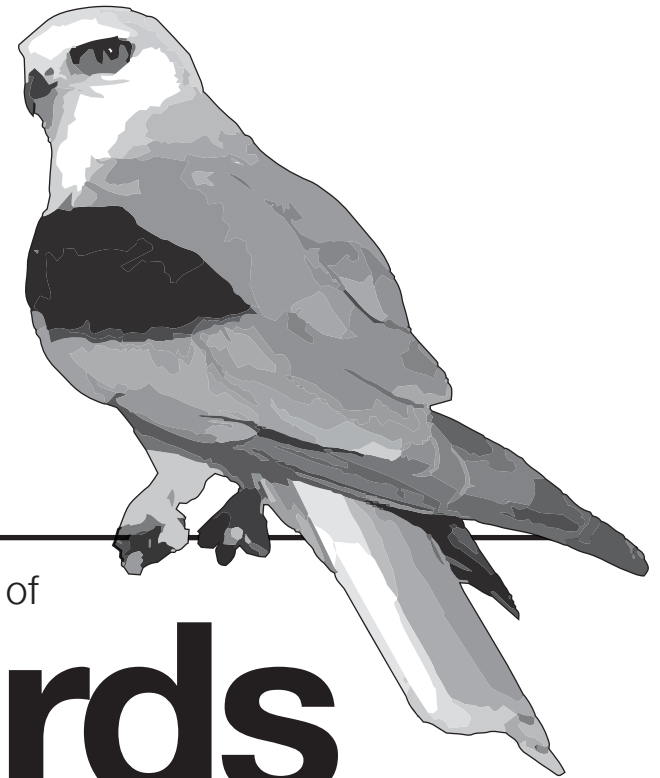
The Santa Clara Valley Audubon Society promotes the enjoyment, understanding, and protection of birds and other wildlife by engaging people of all ages in birding, education, and conservation.

*Inspiring people to care about birds since 1925*

---



[scvas.org](https://scvas.org)



A Checklist of

# Birds

## of Santa Clara County

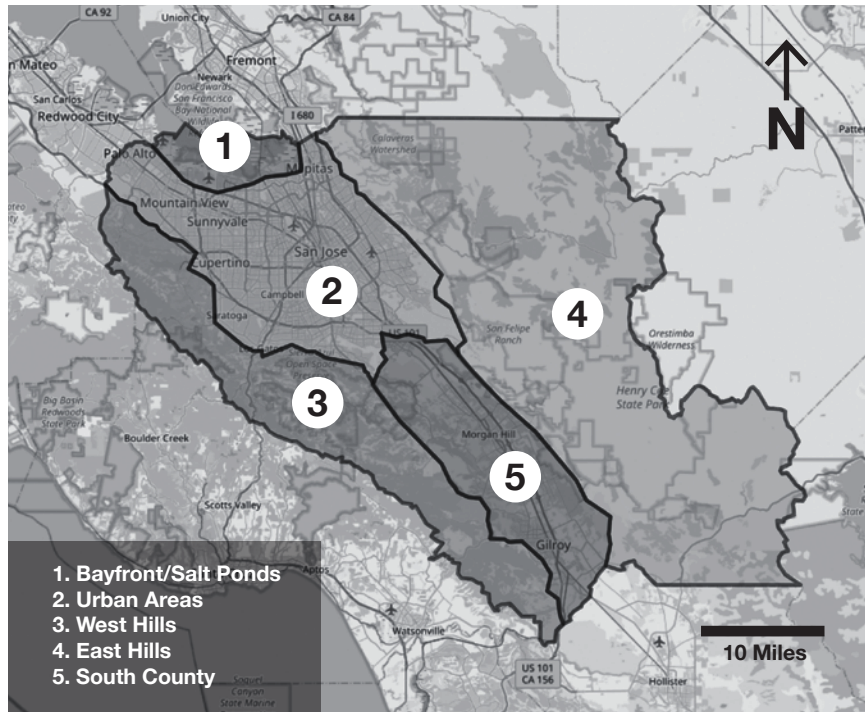
---

Santa Clara Valley Audubon Society

Version 2.0

**Released** 10/08/2022

# Birding in Santa Clara County



## Birding Zones:

Santa Clara County can be divided into five major zones, each of which has different habitats and unique birding opportunities. The map above shows the zones, and below is a selection of productive birding destinations within each zone. For more information about these zones and the birds that can be found there, please visit our self-guided field trip section on the SCVAS website: [scvas.org/self-guided-field-trips](http://scvas.org/self-guided-field-trips).

### 1. Bayfront/Salt Ponds

Don Edwards NWR, Charleston Slough, Shoreline Lake, Palo Alto Baylands

### 2. Urban Areas

Ulistac Natural Area, Vasona Lake Park, Almaden Lake Park

### 3. West Hills

Sanborn County Park, Stevens Creek County Park, Picchetti Ranch Preserve

### 4. East Hills

Ed Levin County Park, Alum Rock Park, Joseph D. Grant County Park

### 5. South County

Santa Teresa County Park, Calero County Park, Coyote Valley Open Space Preserve

# Why a new checklist?

**Checklist updates** are as ancient and reliable, yet as *unpredictable* as the wind. The powers-that-be simply love to lump and split species with impunity. These powers also annually change the names of familiar birds around the globe and seem to enjoy causing widespread confusion. Luckily, neither of those situations have affected us this year. Instead, a rare and wonderful surprise arrival attracted hundreds of astonished birders—the Oriental Turtle-Dove of last winter. There was also a new record of breeding in Santa Clara County when the Least Bitterns (quite rare in Santa Clara County) decided *this* year to start a family. We have made every effort to bring this edition of the checklist up to date, and while we believe we were successful, no doubt we will be proven wrong and the list will want a revision before next year. Such is the wind...

In this edition, you will find we have introduced **Rarity Codes**. These numerals attempt to refine our understanding of each species beyond the **Bar Charts** which often tell us more about how many *sightings* have been recorded, but not the number of individual birds involved. We have also made several manual adjustments to these bar charts to reflect the actual number of individual birds. For example, eBird represents the vagrant Oriental Turtle-Dove with the same thick green bar as Band-tailed Pigeon or Eurasian Collared-Dove. This could be very misleading to those who don't realize the Oriental Turtle-Dove in Palo Alto involved a single bird seen by many hundreds of birders.

This is an ongoing project to incorporate eBird. We will continue to refine it. So to anyone who has ever posted a report to South Bay Birds or eBird, thank you! Whether you knew it or not, you made this list possible.

## Sources

This checklist is a compilation of bird species observed in Santa Clara County, California. Data was derived from the following sources:

**eBird.org**, managed by The Cornell Lab of Ornithology,  
**Checklist of the Birds of Santa Clara County** W.G.Bousman  
**Breeding Bird Atlas of Santa Clara County, California** W.G.Bousman  
**Santa Clara County Bird list** maintained by Brooke Miller.  
**Clements 2021 eBird Taxonomy** as of 10/03/22.

**Checklist compilation** Barry Langdon-Lassagne  
**Design, artwork and review** Matthew Dodder  
**Additional review** Pete Dunten, Richard Jeffers, Brooke Miller, Mike Rogers, Steve Rottenborn

# Notes

## Additions to the V2.0 edition (2022)

Nazca Booby  
Oriental Turtle-Dove

Painted Redstart

**Introduced Birds:** The following birds may be seen, some even regularly, in Santa Clara County, but do not have established local populations and so are not included in our checklist.

Mute Swan  
Egyptian Goose  
Mandarin Duck  
African Collared-Dove  
Yellow-crowned Parrot  
Nanday Parakeet

Red-masked Parakeet  
Northern Red Bishop  
Scaly-breasted Munia  
Orange-cheeked Waxbill  
European Goldfinch

† **Historical Rarities:** These birds are included in the checklist, but the last observation was long enough ago that they do not appear in eBird reports for the county.

Fulvous Whistling-Duck  
Common Nighthawk  
Broad-tailed Hummingbird  
Mountain Plover  
Ancient Murrelet  
Gull-billed Tern  
Northern Fulmar  
Magnificent Frigatebird  
Flammulated Owl  
Scissor-tailed Flycatcher

Philadelphia Vireo  
Pinyon Jay  
Black-billed Magpie  
Arctic Warbler  
Gray Catbird  
Brown Thrasher  
Bohemian Waxwing  
Scott's Oriole  
Prothonotary Warbler  
Kentucky Warbler

## Become a member today!

Annual membership includes a complimentary copy of our location guide for Santa Clara County hotspots **Birding at the Bottom of the Bay**, a free copy of the famous **Breeding Bird Atlas of Santa Clara County** by Bill Bousman, members-only field trips, early access to public field trips, discounts on Nature Shop purchases, as well as discounts on **Classes!**

### Visit our Nature Shop

22221 McClellan Road,  
Cupertino, CA 95014  
Monday – Friday 10:00-4:30  
Telephone: 408-252-3747  
scvas@scvas.org



## A Checklist of

# Birds of Santa Clara County

Covering the **413 species** observed in Santa Clara County, CA

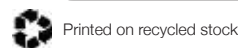
### Symbols:

- \*\* **(bold)** Frequent breeder in the county
- \* **(bold)** Infrequent breeding bird
- † Historical rarity (not in eBird, see last page)
- (\*) Former county breeder

**Bar Charts:** seasonal status of birds: 

### Rarity codes: annual county status

- 1 **Common**, always seen in habitat in season
- 2 **Fairly common**, usually in habitat in season, missed sometimes
- 3 **Uncommon**, always around, but sometimes you can't find
- 4 **Rare**, occurs yearly in the county, but not always in same places
- 5 **Very rare**, does not occur every year
- 6 **Casual** or **Vagrant**, generally fewer than 10 records



Version 2.0  
**Released** 10/08/2022



