



Volume 35, Number 8

October 1988

CALENDAR OF EVENTS

On all field trips, CARPOOL and share expenses. Bring binoculars, field guides, warm clothing, lunch (optional on half-day trips) and liquids. If you can provide or need transportation, call Gail Cheeseman (408)741-5330.

Field Trip Coordinator for October: Grant Hoyt (415) 969-7892.

- Oct. 1 **Coyote Hills Regional Park.** Saturday, 8 am. Half day. Meet at the park entrance. Take 84 towards Fremont, to Thornton Ave. Exit. Go N on Paseo Padre to Commerce Dr. Turn left into the park. Easy walking of 2-3 miles. Possible entrance fee. Highlights: Fall migrants. HEAVY rain cancels. Leader: Grant Hoyt (415) 969-7892.
- Oct. 2 **Point Reyes.** Sunday, 9 am. Full day. Meet at the Drakes Beach parking lot. From Hwy 1 take Sir Francis Drake Blvd. W 14 miles to Drakes Beach turnoff. Go left about a mile to parking area. Car consolidation at Drakes Beach. Bring plenty of water, lunch, and fuel. Highlights: Vagrant warblers and migrant shorebirds. Heavy rain cancels. Leader: Pete LaTourrette (415) 961-2741.
- Oct. 5 **Bay Area Bird Photographers meeting.** Wednesday, 7:30 pm at the Baylands. Ex-BABP member Dr. Denny Mallory will present the program.
- Oct. 8 **Año Nuevo.** Saturday, 9 am. Full day. Meet at the parking lot at the State Reserve entrance. Take Hwy 84 W to Hwy 1. Go S to Año Nuevo. Day use fee of \$3.50. Bring lunch and plenty to drink. Moderate hiking of 4 miles. Highlights: Fall migrants, shorebirds, raptors and seabirds. Leader: Peter Metropulos (415) 592-2417.
- Oct. 11 **Bird Discussion Group.** Tuesday, 9:30 am, at the home of Eve Case, 20537 Verde Vista Lane, Saratoga. (408) 867-4748. Topic: Yellow Rumped Warblers.
- Oct. 12 **South County Field Trip.** Rancho San Antonio Open Space Preserve Wednesday, 9 am. Meet in the third parking lot near the restrooms. Take I-280 to Foothill Blvd south. Right on Cristo Rey Dr. to the park. Leader: Frank Vanslager (408) 257-3647.
- Oct. 15 **Alum Rock Park.** Saturday, 8:30 am. Half day. Meet at the YSI at the park. Take Alum Rock Ave. off Hwy 680 or Hwy 101 E to the park. Lunch optional. Bring waterproof footwear. Moderate walking of about 3 miles. Anticipated species: Dipper, Golden Eagle, Rufous-crowned Sparrow, Winter Wren and migrants. Heavy rain cancels. Leader: Dave Johnston (408) 867-7278.
- Oct. 15 **Lecture on Shorebirds.** Oakland Museum. Sunday, 2 pm. "Great Exertions & Immense Gluttony: Shorebirds Across the Americas", Lecture by Dr. J. Pete Myers, NAS Vice. Pres. for Science. (See Sept. 88 Avocet.)
- Oct. 16 **Moss Landing/Elkhorn Slough.** Sunday, 8:30 am. Full day. Meet at Jetty Road in Moss Landing. Take Hwy 1 S from Santa Cruz. Turn right on Jetty Rd. and park near the bridge. Bring lunch and full tank of fuel. Highlights: Birds of Elkhorn Slough and vicinity including shorebirds, gulls, raptors, Burrowing Owl. Leader: Clay Kempf (408) 462-6534.
- Oct. 19 **General Meeting.** Mitchell Park Community Center, 3800 Middlefield Road, Palo Alto. (Note the change of location.) Wednesday, 7:30 pm refreshments, 8 pm program. Program features Doug Cheeseman, Santa Clara Valley Audubon Member and Professor of Zoology-Ecology at DeAnza College. Read more about this outstanding program inside the *Avocet*.
- Oct. 23 **Birdwalk for Beginners.** Charleston Slough and Adobe Creek. Sunday 11 am. Half day. Meet at the E end of San Antonio Rd. in Mt. View. Easy walking of 2 miles. Learning the basics of shorebirds and waterfowl. Leader: Paul L. Noble (415) 948-3876.

(Continued on page two.)

NOTE CHANGE OF MEETING PLACE FOR OCTOBER AND NOVEMBER GENERAL MEETINGS

The Palo Alto Cultural Center Auditorium is unavailable in October and November, so WE WILL BE MEETING AT THE MITCHELL PARK COMMUNITY CENTER, 3800 MIDDLEFIELD ROAD, PALO ALTO. Located between East Charleston and East Meadow, there is plenty of parking behind the Center, which may be reached from either Middlefield or from East Meadow.



- Oct. 24 **Field Trip North.** Stanford Golf Course. MONDAY, 8:30 am. (course closed to golfers) instead of Wed. Meet at lower parking lot. Golf course sign at traffic light on Juniper Serra (Junipero Serra is a continuation of Foothill Expressway) between Page Mill and Alpine across from Lake Lagunita. Turn uphill. Don't go to driving range. Lunch optional. Leader: Alberta Jasberg (415) 493-9546.
- Oct. 25 **Bird Seed Pickup.** YSI. Tuesday. See details in Bird Seed article.
- Oct. 25 **Bird Seed Pickup.** REI, Cupertino. Tuesday. See details in Bird Seed article..
- Oct. 25 **Jay-Proof Bird Feeder Workshop.** REI, Cupertino. 7-8 pm, following the Bird Seed Pickup. Call the office for more information (415) 329-1811.
- Oct. 28-29 **Bird Seed Pickup.** Garage, Palo Alto. Friday and Saturday. See details in Bird Seed article.
- Oct. 30 **Sunnyvale Baylands Park.** Sunday, 8:30 am. Half day. Meet at the N end of Twin Creeks Softball Center Parking Lot. From Hwy 237, take Caribbean Dr. N, turn right into Twin Creeks approx. 1 mile. Easy walking of 2-3 miles. Highlights: Burrowing Owl, Moorhen, wintering ducks and raptors. Heavy rain cancels. Leader: Larry Parmeter (408) 241-0663.

Field Trip Coordinators for November: Karen and Alan Thomas (408) 265-9286.

- Nov. 5 **Salinas River Mouth.** Saturday, 8:30 am. Full day. Meet at Jetty Rd. off Hwy 1 in Moss Landing. Bring lunch and liquids. Anticipated species: shorebirds. If heavy rains prior to trip makes the road to the Salinas River impassable, alternate birding sites will be covered after birding Jetty Rd. Leader: Bruce La Bar (408) 476-7583.
- Nov. 6 **Stanford University Jasper Ridge Biological Preserve.** Sunday, 8:30 a.m. Half day. Meet at the preserve main gate. From I-280 take Sand Hill Rd. W 2 miles to main gate on left. Gate will be unlocked from 8:10 am to 8:30 am. **Be prompt.** \$2.00 gate fee. Lunch optional. Trip goes rain or shine. **TRIP LIMITED TO 40 PARTICIPANTS ONLY. BY RESERVATION ONLY.** Moderate hiking of 3 miles. Anticipated species: 60-70 possible with Wood Duck and Ring-necked Ducks. Leaders: Bill and Jean Clark, Bill Kirsher, Bob Buell, Winkie Lennihan. **Reservations: (415) 326-7565.**
- Nov. 8 **Bird Discussion Group.** Tuesday, 9:30 am at the home of Eve Case, 20537 Verde Vista Lane, Saratoga (408) 867-4748. Topic: Western Tanager.

LOON EXHIBIT

In celebration of winged creatures, an educational exhibit on loons and their fragile environment opens October 5th in Cupertino at the REI store. The free exhibit is part of the Minnesota Loon Preservation Project and is open for viewing during store hours.

The exhibit was designed for the purpose of reaching as many people as possible and to educate them about the loon and their delicate aquatic home. Loons are an environmental barometer; their very presence tells us that a lake is still pure and the land alive.

The REI-funded traveling exhibit is an interactive display that describes loon characteristics and habitats, the problems people cause the birds, and back country etiquette.

The exhibit encourages participation by giving the audience a chance to hear and feel, as well as see, information about the loon. Display features include:

- speakers on which the public can hear tremolos, wails, and hoots - all loon calls.
- a loon's eye view of its underwater habitat
- loon models and mounts
- information on factors that disturb loon chicks
- a loon trivia quiz.

The loon display hours are Monday through Friday from 10 am to 9 pm, Saturday from 10 am to 6 pm, and Sunday from noon to 5 pm. REI is located at 20640 Homestead Road at DeAnza Blvd (off 280). For more information call (408) 446-1991. Exhibit closes October 29th.

Free clinics will be held on Thursday nights for different aspects of the world of birds. The dates are October 13th, 20th, and 27th. Michael Rigney, Wildlife Ecologist, will present a clinic on Birds of the Baylands on October 20th. Call for information on the other clinics, displays, and sale prices on bird related items.

OCTOBER PROGRAM

At the next General Meeting on Wednesday, October 19, Doug Cheeseman will present a program on the birds, mammals and natural history of Rwanda, Zimbabwe and Namibia. Included will be the gorillas of Rwanda and the incredible adaptations of the plant and animal life to the Namib desert. Doug has had a number of his slides published in calendars and natural history magazines. The slides were taken during the summer of 1988 during Doug and Gail's 9th trip to Africa.

The meeting will be held at the Mitchell Park Community Center, 3800 Middlefield Road, Palo Alto. Meetings begin at 7:30 p.m. when refreshments are served; program starts at 8:00.

NOT YET REGISTERED TO VOTE?

The office of the Secretary of State operates a toll-free voter registration hotline. Any person can call this number to receive a voter registration form. The phone line is open 24 hours/day, all year long: **800-345-VOTE.**

SAN JOSE CHRISTMAS BIRD COUNT

This year the San Jose Christmas Bird Count will be held on Sunday, December 18 - mark your calendars. In recent counts more than 150 people have participated. ALL levels of birding expertise are needed. Please join us that day. More information will be provided in the next issue of the *Avocet*. If you have any questions, please contact the compilers, Sue and Jim Liskovec at (415) 969-5542.

SALES ITEMS AVAILABLE FROM SCVAS

Your purchase of items listed below assists the chapter's educational, recreational, and environmental action programs.



BOOKS

- Field Guide to Birds of North America, *National Geographic Society*, 2nd Edition, 1987. The standard field identification, inc. over 800 species, color illustrations, range maps inc.
\$13 + \$1.25 postage.
- The Birder's Handbook, A Field Guide to the Natural History of North American Birds, *Ehrlich, Dobkin, Wheye*, 1988. First of its kind, a reference guide about the natural history of 625 birds breeding in North America, inc. breeding behavior, displays, mating, conservation status, and much more.
\$14 + \$1.60 postage
- San Francisco Peninsula Birdwatching, *Sequoia Audubon Society*, 1985. A guide to birdwatching locations from San Francisco to southern San Mateo County.
\$9.40 + \$.90 postage
- Birding Northern California, *Jean Richmond*, 1985. Guide to birdwatching locations from the Oregon border through Monterey Co.
\$10.50 + \$.90 postage
- Birds of Northern California: An Annotated Field List, *Guy McCaskie et al*, 1988. The updated version of an indispensable book.
\$6 + \$.90 postage
- Hawks, *William Clark & Brian Wheeler*, 1987. Peterson Field Guide to Hawks.
\$12 + \$.90 postage
- Tracks in the Sky, Wildlife and Wetlands of the Pacific Flyway, *Tupper Ansel Blake and Peter Steinhart*, 1987. A stunning collection of essays and full-color photographs featuring birds, wildlife and habitat from Alaska to Mexico along the Pacific Flyway.
\$32 inc. postage
- A Birdwatcher's Cookbook, *Erma Fisk*, 1987. Recipes and anecdotes for birdwatchers.
\$16 + \$.90 postage
- Banquets for Birds, *National Audubon Society*, 1983. Suggestions for supplementary feeding, inc. discussion of plantings, feeders, seed mixes and more.
\$2.25 + \$.75 postage
- A Beginner's Guide to Birdwatching, *National Audubon Society*. An introduction to how to birdwatch inc. basic equipment, books, techniques.
\$1

CHECKLISTS AND TAPES

- Checklist of the Birds of Santa Clara County, SCVAS.
\$.50
- Field List of California Birds, *Western Field Ornithologists*. A pamphlet to record sightings from up to ten birding trips.
\$1
- Common Breeding Bird Songs of the San Francisco Bay Area, Vol. 1, *Thomas Sander*. Cassette of songs heard locally.
\$8

UNIQUE GIFTS

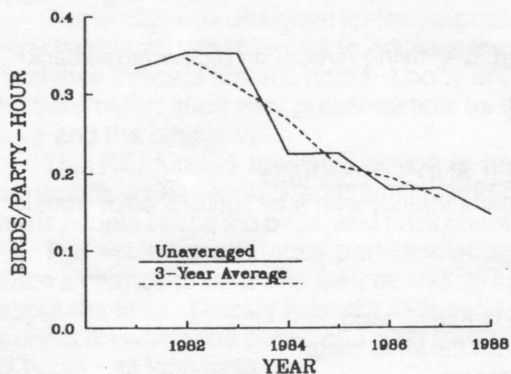
- SCVAST-Shirt. White with black, red and blue design of Avocet in marsh.
\$10 + \$1.25 postage
- SCVAS Tote Bag. Same design on sturdy canvas tote.
\$10 + \$1.25 postage
- SCVAS Notecards. Same design, black ink on cream cardstock. Four cards with envelopes.
\$2
- SCVAS Pin. 3/4" flying Avocet on blue enamel background.
\$3.50 or 2/\$6
- SAVE WETLANDS Autoshade. Protect your car's interior with a beautiful 5 color marsh scene.
\$5 + \$.90 postage
- SAVE WETLANDS Mug. Same design on ceramic mug.
\$8 + \$1.25 postage
- Burrowing Owl Notecards. 10 cards w/envelopes, 2 different full-color photos of Burrowing Owls.
\$5 + \$.90 postage

All prices listed above include tax. To order, please make checks payable to SCVAS, and send to SCVAS, 415 Cambridge Avenue, Suite 21, Palo Alto, CA, 94306 (415) 329-1811.

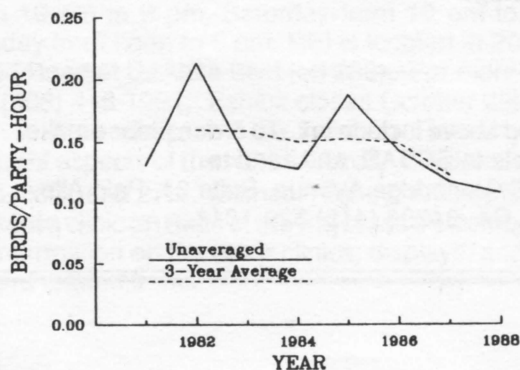
FIELD NOTES - Bill Bousman

In a recent article in *The Condor* (90:359-372), Joe T. Marshall reported returning to an area of the Sierra Nevada that he had censused very thoroughly as a young man in the 1930's to see if he could detect any significant population changes there. He found that two of the species that had commonly bred there were gone, but there were no relevant habitat changes that he could detect. He argued that both of these species, the Olive-sided Flycatcher and Swainson's Thrush, are site dependent when they return to their winter territories in the Neotropics. With the ongoing tropical deforestation the winter habitat becomes critical for the success of these species. How have these two species fared in the Santa Cruz Mountains? Both are considered fairly common on the Santa Clara County checklist and common on the San Mateo County checklist. We now have eight years of data from our Palo Alto Breeding Bird Count (BBC) and I plot here the birds/party-hour that we have recorded for both species. The three-year running average is also shown and it seems clear to me that the Olive-sided Flycatcher is undergoing a long-term decline, but that the Swainson's Thrush population is not showing any marked changes. Based on a three-year average the population of Olive-sided Flycatchers has declined by 51% from 1982 to 1987. A partial survey of other species on the Palo Alto BBC that winter in the tropics shows that Western Wood-Pewee, Warbling Vireo, Orange-crowned Warbler, and Black-headed Grosbeak have experienced similar declines. Is this long-term trend? Are there other explanations for what we see here? Unquestionably, the kind of data that are obtained from long-term monitoring programs such as the Breeding Bird Counts or Christmas Bird Counts are very valuable to all of us. (An analysis of this summer's BBC is available from Lynn or me for the cost of copying and postage.)

Olive-sided Flycatcher



Swainson's Thrush



A high count of 550 **Am. White Pelicans** was obtained in the vicinity of Charleston Slough on 4 Sep (Alan Eisner - AME). This is the highest count we have had locally since 1985, although I believe a complete census of the south bay would show a larger total. **Brown Pelicans** have been fairly regular this month. Peak numbers reported were of 29 on 27 Aug n. of Crittenden Marsh (Bill Bousman - WGB). **Green-backed Heron** have been found during the month at the Mountain View Forebay 1 Aug (Phyllis Browning - PMB), near there on 13 Aug (AME, WGB) and over Stevens Creek on 27 Aug (WGB). Three **Wood Duck** on 28 Aug in Menlo Park were still coming to a feeder along San Francisquito Creek (Betty Groce). A female **Redhead** was at Charleston Slough 31 Jul (Peter Metropulos - PJM) - did they nest locally this year? A female **Red-breasted Merganser** in the salt pond n. of Crittenden Marsh 27 Aug (WGB) seems very early for a wintering bird. An **Osprey** flying south over San Francisquito Creek 5 Sep (WGB) is an early fall migrant. Six **Wild Turkey** at Henry Coe SP 29 Aug (James Yurchenco - JY, Amy Lauterbach - AL) are considered normal for that area. An adult **Virginia Rail** at the Mountain View Forebay



23 Jul (PMB) is early for a migrant and suggests that one may have summered here. **Lesser Yellowlegs** have been found at their usual haunts. Two to three have been found in the Mountain View Forebay at least through 19 Aug (AME, Paul Noble - PLN). More have been found in Charleston Slough with at least 10 there 4 Aug (Michael Mammoser) and 13 on 14 Aug (WGB). The Palo Alto Flood Control Basin has held typical numbers with 2 there Aug (Alan Walther). Lastly, 3 have been seen at the Sunnyvale WPCP from 6-21 Aug (Chris Wolfe - CW, WGB). A **Spotted Sandpiper** was at the latter location 6 Aug (CW) for our only fall record so far this year. Two **Red Knot** at Charleston Slough 31 Jul (PJM) are the only records we have had this summer. Two juv. **Baird's Sandpipers** showed up at the Mountain View Forebay on 7 Aug (MJM) and stayed at least through 13 Aug (PLN, WGB, Rod Norden - RN, AME, JY, AL). An additional bird was seen at Charleston Slough 7 Aug (Steve Miller *fide* MJM). Early **Pectoral Sandpipers** were found with singles at the Sunnyvale WPCP 6 Aug (CW) and another at Charleston Slough 9 Aug (RN). An adult **Glaucous-winged Gull** at Charleston Slough 9 Aug (RN) probably summered locally. A **Common-Tern** at Charleston Slough 27 Aug (PLN) was the only report of this rare fall migrant. **Least Terns** continued to stage at Charleston Slough during August (PMB, MJM, RN, WGB) with the last report of 3 on 28 Aug. The best count of birds (not reported last month) was of 11 ad. and 7 imm. on 22 Jul (PJM). Six **Vaux's Swifts** were feeding over the Sunnyvale WPCP 21 Aug (WGB) and were probably from a local population rather than migrant birds. Early arrivals: **Eared Grebe**, Sunnyvale WPCP, 21 Aug (WGB); and **Northern Shoveler** (426) noticeably early in Charleston Slough, 28 Aug (WGB).

If you see an "uncommon to rare" please write or call: Bill Bousman, 321 Arlington Way, Menlo Park, CA 94025 (415/322-5282).

**LAST CALL FOR BIRD SEED AND
ADDITIONAL PICKUP LOCATION**

If you hurry, you can still order bird seed in our Fall sale. This is a pre-paid sale. Your order, including a check payable to SCVAS, must be received by **MONDAY, OCTOBER 10**. ALL ORDERS MUST BE PICKED UP FROM THE UNDERGROUND GARAGE AT 379 LYTTON AVE, on **Friday, October 28** between 4 and 6 pm, or on **Saturday, October 29** between 11 am and 1 pm, **YSI, VASONA PARK** on **Tuesday, October 25** between 4 and 6 pm or **REI, HOMESTEAD ROAD, CUPERTINO** on **Tuesday, October 25** between 5 and 7 pm. Please send your order, with your name, address, phone number and a check to SCVAS, 415 Cambridge #21, Palo Alto, CA, 94306. If you have already sent in an order, and would like to change your pickup location to REI, please call the office.

**BIRD SEED SALE ORDER FORM
Fall 1988**

PLEASE CHOOSE AND MARK ONE LOCATION:

PICKUP LOCATIONS: ___ 379 LYTTON AVE., PALO ALTO, FRI. OCT 28 OR SAT. OCT. 29
OR ___ YSI, LOS GATOS, TUES. OCT. 25
OR ___ REI, CUPERTINO, TUES, OCT. 25

	# Bags	Cost
Premium Seed 20 lb @ \$ 8/bag	_____	_____
Premium Seed 50 lb @ \$17/bag	_____	_____
Western Wild 20 lb @ \$ 7 /bag	_____	_____
Western Wild 50 lb @ \$15/bag	_____	_____
Black Oil Sun. 20 lb @ \$13/bag	_____	_____
Black Oil Sun. 50 lb @ \$30/bag	_____	_____
Striped Sun. 20 lb @ \$15/bag	_____	_____
Striped Sun. 50 lb @ \$34/bag	_____	_____
Thistle 5 lb @ \$10/bag	_____	_____
Thistle 20 lb @ \$35/bag	_____	_____

Subtotal _____

Add 7% Tax _____

Total _____

Name _____

Address _____

City _____ Zip _____

Phone () _____

PLEASE RETURN THIS ORDER TO THE SCVAS
OFFICE BY MONDAY, OCT. 10
SCVAS, 415 Cambridge, #21, Palo Alto, CA 94306

Volunteers are still needed to help unload seed at all of the locations and times noted above. If you would like to help for 2 hours, and receive a 15% discount on seed ordered, please call the office, (415) 329-1811.

WANT TO GET INVOLVED?

SCVAS is looking for help from members. Your participation need only be attending one or two meetings, to give some advice, or, you are welcome to dig in and work as part of the committees.

Education Committee - educators, writers, photographers, and members with time during day to take slide shows to schools, are sought to help develop a wetlands program for elementary schools. Contact Judy McEuen, (408)251-3086
Environmental Federation of California Committee - SCVAS has joined EFC, a payroll deduction campaign. We are currently working to bring the campaign to **Ampex, Atari, AT&T, FMC, Stanford University, VISA and SRI**. If you are an employee of one of these companies, and are interested in bringing the choice of donating to a variety of environmental groups through payroll deductions to your fellow employees, please call Don Price at (415) 327-1254.
AVOCET Committee - The Avocet is going to have a new look! Members interested in giving the committee some advice about Macintosh desk-top publishing, graphic design or with ideas about content (pros and cons) are encouraged to call Levona Sterngold (408) 738-2859.

10 MINUTE ACTIVIST

"Only 10 minutes of your time can make a difference!"

Minimize Junk Mail: Reduce. Reuse. Recycle

Write Direct Marketing Association, 6 East 43rd St., New York, NY, 10017. Upon request, DMA will stop your name from being sold to most large mailing companies, potentially reducing junk mail from new sources by 75%....."Recycling saves energy and resources. By recycling an aluminum can, you will save .69 kilowatt hours of electricity - enough energy to run a color television for 3 hours. Recycling 1 ton of paper saves 17 trees, and every glass bottle saves enough energy to light a 100 watt lightbulb for 4 hours."
- Regional Parks Log, East Bay Regional Park District.

MEASURE B

We are working to pass a four year extension to the Santa Clara County Parks Charter, Measure B on the November ballot. Extending the Parks Charter will insure that county funds continue to go to park acquisition and maintenance. For information on how you can get involved with this campaign, call Vicki Moore, (415) 543-4291.

THANKS TO VOLUNTEERS

SCVAS gratefully acknowledges contributions of time and effort from the following volunteers:

For attending SCVAS booth at Santa Clara County Fair: Dave Johnston, Mark and Judy McEuen, Kevin and Barbara Monahan, Theresa Spinler, Alan and Karen Thomas, Nick Yatsko.

For office assistance: Yana Arnold, Tibby Simon
For computer assistance: Ray Hosler, Janice Layman

BIRDING IN CHINA

One of the nice things about being a schoolteacher is having summers off to travel. This past summer I fulfilled a longtime dream of journeying through mainland China and Korea. While the trip emphasized Chinese history and culture, I got to do a good deal of birdwatching as well, and rewarded myself with many new species.

For several months before leaving, I studied DeSchaunensee's *Birds of China*. It has good descriptions, but only about half of the 1200 listed species are depicted. As backups, I often referred to *Birds of Japan* by the Wild Bird Society of Japan, and *Birds of Southeast Asia* by King et al. All three books are available through the Audubon Society bookstore in Los Angeles.

One thing about birding in China is that, like the U.S., there's very few species in the big cities. In Beijing, Shanghai, and Xi'an (Sian), I saw lots of Fork-tailed Swifts and Asian Tree Sparrows, but not much else. Only when I got to Guangzhou (Canton) in the south of China did I see many city dwellers such as Grey-eyed Bulbuls, Chinese Bulbuls, Japanese White-eyes, and Prinas.

The countryside and the rivers are the best places to see birds in China. One of the best birding days I had was on a bus ride from Chongqing (Chungking) to Dazu, which is famous for its stone Buddha carvings. The 100 mile long road to Dazu winds through lush hills and valleys, and along it I spotted such birds as the Tiger Shrike, Brown Shrike, Black-capped Kingfisher, Asian House Martin, Blue Rockthrush, Japanese Sparrowhawk, Grey-capped Greenfinch, and Bamboo Partridge. In Dazu itself, I saw a pair of Chinese Goshawks flying over our hotel. Back in Chongqing, I saw my first Pied Kingfisher flying across the Changjiang (Yangtze) River.

Four days on the Changjiang River and one of its tributaries, the Daning river, rewarded me with many species. I recorded Pallas' Fish Eagles almost every day. I also spotted many Grey Herons, Little Egrets, Chinese Pond Herons, White Wagtails, Common Kingfishers, Little and Whiskered Terns, and Black Drongos. A rare sighting one morning on the Changjiang was a Cotton Pygmy Goose.

The Li River near Guilin (Kweilin), one of the most beautiful areas in China, is also good for birding. There I saw Common Sandpipers, Little Herons, Crested and Black Mynas, Temminck's Cormorants, Common Shelducks, and Oriental Greenfinches. The Li River area is also where I came across large herds of Water Buffalo, the beast of burden that is commonly used throughout China.

Hong Kong is good for shopping, but not for birds. Nevertheless, I was able to record several different Bulbuls, Olive-sided Sunbirds, Plumed Egrets, and Long-tailed Shrikes.

I was in Seoul, South Korea, for only a few days, and saw mostly preparations for the Olympics. However, I added to my list Black-naped Orioles, Eurasian Kestrels, and Asian Skylarks.

All in all, I added 72 species to my life list, not bad for part time birding. Next time I visit China, though, will be in the Spring or Fall - the summers are hot and humid. Anytime, though, is good for seeing China, for its history, culture, natural beauty, and, of course, its birds.

- Larry Parmeter

Soul of an ancient land

She cries, the soul of an ancient land.

She cries, beneath the crashing, tearing, crushing burden on her children,
her magnificence raped by light of day, left empty, helpless and shattered, proud yet now but a violated shell.

Her children live in her soft bosom, yet suddenly crashing, tearing, crushing the evil stabs her softness. Endless pain, they are left torn asunder, dismissed testaments to her fading soul.

He laughs, thrill coursing through his veins, bending his will towards the next summit of his lust. The children die once again, the shell empty even more, praying for the peace of the past, haunted by the specter shadow on the future.

The specter passes, seeking yet more distant goals, scars charting the paths of the modern rite of passage — the devil's footprints long and narrow across her bosom.

Her children are gone. God's miracles once inching skyward through the decades, now dead beneath the endless scar trespassing across her once soft bounty.

Soft no more, empty lonely, alone, she cries, the soul of an ancient land.

Kevin H. C. Monahan
© 1988

IN MEMORIAM

We regret to note the death of Karen Dale (Perry) Schwartz, 46, on August 3 after suffering a stroke. She had been an administrator and naturalist at Audubon Canyon Ranch in Stinson Beach since 1975. She is survived by her children Alisa Marie, Shala Adele, and Aaron, and her husband Maurice (Skip) Schwartz, who is administrator of the Bolinas Preserve.

- The Quail, Mt. Diablo Audubon Society

GIFTS AND MEMORIALS

SCVAS sincerely thanks Robert F. Arrowood, for a generous donation to the General Fund

From Janice Wong, in appreciation of Flo Hunter, who brought SCVAS slide show to Nurturee Preschool



SCVAS INCOME STATEMENT
For the Year Ended May 31, 1988

Income from budgeted activities:	
Investment Income	\$25,193
Members' Dues	22,251
Avocet Subscriptions	786
Christmas Bird Count Participation Fees	544
Birdathon	4,910
Tracks Environmental Action Event	4,346
Gifts and Memorials	606
Sales, net of expense	4,196
Other Income	1,081
	<hr/>
Total Budgeted Income	\$63,913

Expenses of budgeted activities:	
Administrative Expenses	\$36,168
Newsletter	14,260
Environmental Action (1)	6,378
Field Trips	595
Education (2)	7,741
Entertainment	1,000
Grants and Science Fair	3,021
	<hr/>
Total budgeted expenses	\$69,163

Net expense of budgeted activities (5,250)
=====

Special income and expenses:	
Bequest of Emily Smith	\$45,398
Gains from the sale of securities	11,988
Capital gains (and losses) declared as dividends and reinvested	16,311
Commitment - National Fish and Wildlife Foundation (3)	(5,000)
Androes Fund (no expenditures in year)	2,243
Revenues received in trust for both (4)	65
	<hr/>
Total extraordinary income	71,005

Net increase in retained income \$65,755
=====

- (1) Includes \$4,088 of expenses and donations arising from Tracks event.
- (2) Includes \$4,900 of donations from the Birdathon.
- (3) For acquisition of San Francisco baylands.

SCVAS BALANCE SHEETS
For Year Ended May 1988

ASSETS:	
Cash - Checking Account	\$ 2,434.76
Savings Account - Cal Fed Savings	6,056.88
Other Short-term Investments	8,557.90
Investments - At Cost	
(Market Value - \$315,468.41)	304,487.98
Inventory - at cost	3,149.97
	<hr/>
Total Assets	\$324,687.49
	=====

LIABILITIES AND SURPLUS:	
Liability - Commitment to Nat'l Fish and Wildlife Fdn	\$ 5,000.00
Surplus	319,687.49
	<hr/>
Total Liabilities and Surplus	\$324,687.49
	=====

STATEMENT OF SURPLUS	
Surplus, End of Prior Year	\$253,932.51
Income for the Year	65,754.98
Surplus Designated to Meet Long-Term Needs	(270,000.00)
	<hr/>
Unrestricted Surplus	\$ 49,687.49
	=====

SEPTEMBER SCVAS BOARD ACTIONS

At the September Meeting, the Board took the following actions:

- 1) Approved \$300 expenditure from Androes Memorial Education Fund, to hire professional curriculum writer, to create script for slide show on local birds.
- 2) Directed the Avocet Committee to discuss, and return to the Board by the December meeting with recommendations on, the pros and cons of accepting advertising in the Avocet.
- 3) Approved expenditure of \$250 to \$500 from the Environmental Action Fund, to the Independent Documentary Group for their work on a film on the Bay.
- 4) Approved amendments to the Bay Area Audubon Council Wetlands Resolution.

Board Meetings are held on the first Tuesday of each month, and are open to all interested members. If you have any questions about the items above, or about Board actions in general, please contact Dave Johnston, (408)867-7278 or SCVAS office, (415) 329-1811.



Staff	Lynn Teneffoss	415/329-1811	DIRECTORS (1987-90)		Education		
President	Dave Johnston	408/867-7278	Grant Hoyt	415/969-7892	Library		
1st Vice President	Barbara Monahan	408/425-7841	Trish Mulvey	415/326-0252	Field Trips	Paul Noble	415/948-3876
2nd Vice President	Martha Esserlieu	415/487-1282	Christine Wolfe	408/245-9359		Alberta Jasberg	
Treasurer	Don Price	415/327-1254				Linda Hagelin	408/867-3046
Rec. Secretary	Mark McEuen	408/251-3086	DIRECTORS (1988-91)		Membership		
Past President	Judy McEuen	408/251-3086	Jules Resnick	415/961-8619	Audubon Adventures	Elaine Gould	408/448-0622
			Theresa Spinler	408/559-1889	Hospitality		
			Donna Zetterquist	408/429-9716	Environmental		
					Action	Barbara Monahan	408/425-7841
DIRECTORS (1986-89)			CHAIRPERSONS		Christmas		
Jim Anderson		415/272-1159	Editor	Levona Sterngold	Bird Count	Jim & Sue Liskovec	415/969-5542
Rob Colwell		415/326-2400	Programs	Doug & Gail	Grants	Donna Zetterquist	408/429-9716
Debby Johnston		408/262-5513		Cheeseman	Photo Club	Pete LaTourrette	415/961-2741

General meetings are open to the public. Board of Directors meetings are open to all members. Call the office for times and direction. *Avocet* deadline is the first Monday of the month. Send contributions to the editor, Levona Sterngold, 720 M Blair Court, Sunnyvale 94087

WANTED: SLIDES OF BIRDERS

Do you have any slides of SCVAS field trips? Or of friends birding? SCVAS would like to receive donations of slides of people watching birds - in your backyard, at the Baylands, or on a field trip, to use in several slide shows we are in the process of developing, for school children and community groups. Please send to SCVAS office, 415 Cambridge Ave, #21, Palo Alto, 94306.



EXOTIC PLANTS

Most of us are aware of the highly invasive character of broom and pampas grass. These exotic species have no habitat value for wildlife and crowd out native plants that provide good habitat. This is to alert everyone to add ICE PLANT to your list of undesirables. Ice plant is frequently used in median strips and along the Bay because it is a fast grower, needs little maintenance, and stabilizes banks. It is extremely destructive when adjacent to marshes and the Bay. It is able to grow in relatively saline conditions and therefore grows down into the high marsh zone, crowding out plants that have important habitat value, such as grindelia, atriplex and even pickleweed. It has no habitat value - no species eats it and it is too low to provide cover. We urge anyone who lives near the Bay or other wet area, to consider replacement of ice plant with another less destructive plant species. The Redwood Log, Marin Audubon Society

NON-AUDUBON EVENTS

- Sat., Oct. 1, 9 am -1 pm, Oceanic Society sponsors "Hazardous Waste Impacts on the Bay: Planning for Action", Oakland Museum, \$10, call 415-441-5970.
- Sat., Oct. 1, 9:30 am-4 pm, American Ocean Foundation Conference sponsors "Vote the Coast: A Conference on the Future of the California Coast", Palace of Fine Arts, SF, \$10, call 415-453-3123.
- Pescadero Marsh Nature Walks, Oct. 1, 15, 29, 10:30-12:30, Oct 9, 23, 1-3 pm. Meet under Pescadero Bridge on Highway 1, hike 2 miles with docent or ranger.
- Palo Alto Baylands nature walk, Sat., Oct 22, 9:30 am, meet at Baylands Interpretive Center.
- Cordell Bank Pelagic Trip, 6:30 am, October 23, from the Tide's wharf in Bodega Bay. \$40, call Roger Marlowe at (707)829-0705.
- Monterey Bay and other Pelagic Trips, Shearwater Journeys, call or write for list, Debra Love Shearwater, P.O.Box 7440, Santa Cruz, CA, 95061, (408) 688-1990.
- Calif Dept Fish and Game, Annual Photography Award Program, entries due Dec.30, 1988, for more info. call (916) 445-7613.
- Educator and naturalist, Joseph Bharat Cornell, will be leading an outdoor workshop for teachers on Saturday, Oct. 29 at Weider Pavilion in Huddart Park, Woodside. For more information call Shoshana McDivitt, (415) 323-3363.

BREEDING BIRD COUNT REPORT AVAILABLE

For a copy of Bill Bousman's analysis of the 1988 Palo Alto Breeding Bird Count - it is fascinating reading - please send a stamped self-addressed 4x9" envelope to SCVAS office, 415 Cambridge Ave, #21, Palo Alto, CA, 94306.

DONATIONS - Santa Clara Valley Audubon Society welcomes gifts in general, or gifts in honor or memory of relatives and friends. Such donations will be used as specified, or, if unspecified, will be used to support environmental education and projects. All gifts and donations are tax deductible.

MEMBERSHIP - To join the Audubon Society or subscribe to the *Audubon Activist*, send a check, payable to NATIONAL AUDUBON SOCIETY, to SCVAS office, 415 Cambridge Avenue, Suite 21, Palo Alto, CA 94306. Membership includes AUDUBON magazine, the national publication, and the *Avocet*. *Avocet* subscriptions alone are \$6/year. Make checks payable to SCVAS. They are published monthly except July and August. Send all address changes to the office promptly.

CHECK CATEGORY

- Individual / \$30
- Family / \$38
- Senior Citizen / \$21
- Senior Citizen Family / \$23
- Student / \$18
- Avocet* only / \$6
- Audubon Activist* / \$9
- Introductory Membership / \$20

Name _____

Address _____

City _____ State _____ Zip _____

Gift from _____